



# What's New in **WAVE® 5.3**

## Empower Your Mobile Workforce to Communicate Anywhere, On Any Device and On Any Network

Twisted Pair's WAVE® software simplifies communications for enterprises of all sizes by removing technology barriers to seamless interoperability. Unique for its software-only approach and compelling for its unmatched functionality, flexibility and performance, WAVE connects and extends the IP-centric enterprise and the mobile workforce using two-way radio systems, smartphones, desktop IP phones and PCs.

### Cost-Effective, Software-Only Technology

WAVE is the industry's only pure software solution dedicated to providing unified voice communications across both office-based and mobile workforces. Whereas other technologies require proprietary, vendor-supplied server and data-network components, WAVE operates on off-the-shelf, industry-standard hardware. This approach enables greater deployment flexibility, lowers acquisition costs and preserves prior investments in network, server and desktop infrastructure.

### Rich Functionality Yields Higher Performance

WAVE has achieved its market-leading position by delivering more performance and greater functionality than any other solution. Our battle-tested core communications platform provides unmatched system availability and redundant failover capability. Our innovative Push-to-Talk (PTT) feature for mobile devices, including smartphones and tablets, redefines the value of PTT for teams of users regardless of device or service provider. And native support for IP telephony platforms and multi-vendor and private radio systems, such as MPT-1327 and Motorola's MOTOTRBO™ professional digital two-way radio system, ensure rapid, seamless integration in mission critical communications environments.

### Flexible, Adaptable, Customizable

The WAVE Software Development Kit (SDK) gives OEM partners, major systems integrators and software development companies the opportunity to develop new solutions and extend the capability, flexibility and value of their existing communications systems. Custom WAVE-powered applications deliver advanced capabilities to the defense, public sector and commercial markets around the world.

### WAVE 5.3 HIGHLIGHTS

#### WAVE Communicator for Microsoft SharePoint

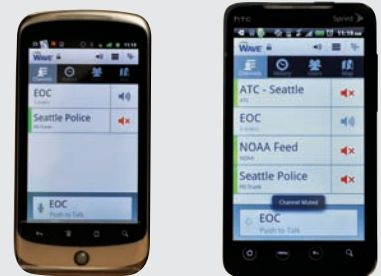
WAVE Communicator for Microsoft SharePoint extends the collaborative capabilities of Microsoft® SharePoint™ 2007 & 2010 by adding a critical communications web part directly in the user's SharePoint experience. With WAVE Communicator, SharePoint users no longer require separate communication applications or handsets to contact and collaborate with mobile workers using two-way radios, smartphones and other push-to-talk devices.

#### WAVE Mobile Communicator for Android

When equipped with the WAVE Mobile Communicator, an Android smartphone can act like a multi-channel two-way radio handset that sends and receives secure audio over any service provider's data or IP network. As well as proving access to up to 20 communications channels, the Mobile Communicator can show who's available on each secure channel, who last spoke and the location of all users with GPS-enabled devices. Mobile Communicators are now available for select Android, BlackBerry and Windows Mobile smartphones and tablets. iPhone support will be added in late 2011.

#### WAVE Web Communicator

WAVE Web Communicator is a feature-rich web application that allows any office-based or mobile worker to monitor, transmit, and receive audio from multiple communication systems such as two-way radio networks telephones using a browser-based application. The Web Communicator also has the ability to display presence information directly on a map from location-enabled Mobile Communicators and GPS-supported push-to-talk radio users.

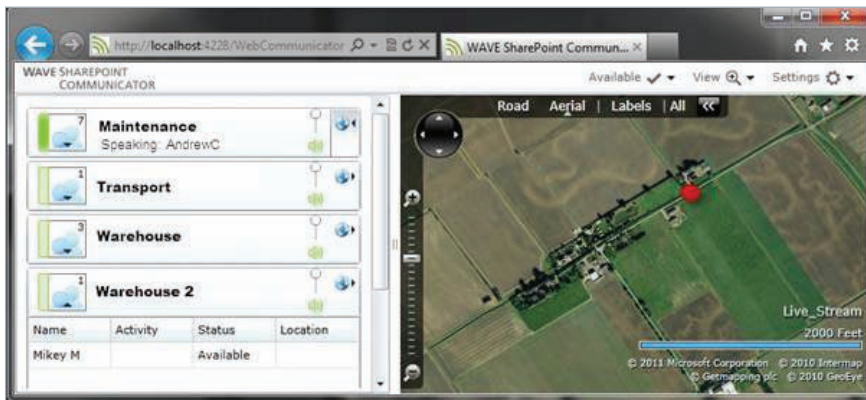


### Secure Push-to-Talk for Smartphones and Tablets

When equipped with the WAVE Mobile Communicator, a BlackBerry, Android, iPhone or Windows Mobile smartphone can act like a multi-channel radio handset that sends and receives secure audio. Audio processing, management and distribution are managed by WAVE servers residing in an enterprise data center, in a cloud environment or, if needed, on an individual PC.

### Extending Microsoft Enterprise Collaboration

Microsoft® SharePoint™ is the industry's leading web application platform. Its multi-purpose capabilities allow for managing and provisioning of intranet portals, extranets and websites, document management and file management, social networking tools, enterprise search and third-party developed solutions. With WAVE Communicator for Microsoft SharePoint embedded as a SharePoint web part, users no longer require separate communication applications or handsets to contact and collaborate with mobile workers using two-way radios, smartphones, tablets and other push-to-talk devices.



WAVE Communicator for Microsoft Lync Interface

### Access Critical Communications with a Web Browser

In some critical communications situations, WAVE channels may need to be accessed from either a company-owned, private or public computer that does not have a WAVE application already installed. In these circumstances a WAVE Web Communicator can provide instant access to authorized communications channels using a browser-based application, allowing office-based or mobile worker to monitor, transmit and receive audio from multiple communication systems such as two-way radio networks and telephones.

### WAVE COMPATIBILITY

#### Operating Systems & Browsers

- Windows Server 2003 Release 2, Service Pack 2, 32-bit
- Windows Server 2008 Release 2, Standard Edition, 64-bit
- Windows Server 2008 Release 2, Enterprise Edition, 64-bit
- Internet Explorer 7
- Internet Explorer 8

#### IP PBX

- Avaya Communications Manager 4.0.1 (H.323 support only)
- Cisco Call Manager 4.2 (H.323 support only)
- Cisco Unified Communications Manager 6.0 (H.323 and SIP support)
- Cisco Unified Communications Manager 7.0 (SIP support only)
- Nortel Business Communication Manager 5.0 (H.323 only)
- SIPx 3.10 (SIP only)
- Free PBX (Asterisk) 2.8.0 (SIP only)
- 3CX version 8 (SIP only)

#### IP Phone Endpoints

- Nortel 1140e
- Cisco 7941
- Cisco 7961

#### Radio Systems

- Motorola MOTOTRBO
- MPT-1327
- PassPort 3.0

#### Audio Codecs

- G.711 ALaw 64K
- G.711 uLaw 64K
- G.721
- G.726 @ 16 kbps
- G.726 @ 24 kbps
- G.726 @ 32 kbps
- RED (RFC 2198)
- GSM Fullrate
- PCM 16-bit 128 kbps
- RGL ALaw
- RGL uLaw
- Speex (all)
- G.729a
- MELPe

#### SDK APIs

- .NET 2.0 / 3.5 SP1
- Java JRE 1.6.0

#### UC and Collaboration

- Microsoft Lync Server 2010
- Microsoft SharePoint Server 2007 & 2010

### ABOUT TWISTED PAIR

Twisted Pair is the recognized leader in critical communications. Our WAVE software empowers your mobile workforce with critical communication applications for secure, real-time collaboration anywhere on any device. Built on a battle-tested communications interoperability platform, WAVE delivers voice, video, location, presence and other forms of data deployed as an enterprise product or cloud-based service throughout commercial, public sector and defense organizations. WAVE has been proven in thousands of the most complex deployments around the world to help integrate and control a truly unified communications system so that office-based and mobile workers can simply talk, make decisions and act.

© Copyright 2011 Twisted Pair Solutions, Inc. WAVE is a registered trademark of Twisted Pair Solutions, Inc. Wide Area Voice Environment, WAVE Desktop Communicator, WAVE Dispatch Communicator, WAVE Mobile Communicator, WAVE Communicator for Microsoft Lync, WAVE Communicator for Microsoft SharePoint, WAVE Web Communicator and WAVE IP Phone Client are all trademarks of Twisted Pair Solutions, Inc. All other trademarks mentioned in this document are the property of their respective owners. All rights reserved. Specifications are subject to change without notice.

### Let's Talk

We work closely with customers around the world. How can we help you?

twistpair.com  
info@twistpair.com  
+1 (206) 442-2101

#### CORPORATE HEADQUARTERS

3131 Elliott Avenue  
Suite 200  
Seattle, WA 98121 USA  
(T) +1.206.442.2101  
(F) +1.206.812.0737  
(E) sales@twistpair.com

#### EMEA

Davidson House  
Forbury Square  
Reading, RG1 3EU  
(T) +44.118.900.1110  
(F) +44.118.900.1111  
(E) sales.emea@twistpair.com

#### APAC

2 St Peters St  
Glenelg East, Adelaide  
South Australia, 5045  
(T) +61.(08).8376.5905  
(F) +61.(08).8125.6570  
(E) sales.apac@twistpair.com